

**MASTERflex®**

**OHAUS®**

**VWR™**  
part of avantor

**OXFORD**  
LAB PRODUCTS USA

**Cole-Parmer®**

**VILBER**

**stakpure**

**GVS**

**AS ONE**

**GRANT**

## Product Catalogue 2024

### Laboratory Equipment & Bioprocessing Solution

Research & Lab equipment / Biopharmaceutical Lab & Production / Life Sciences Lab / Lab Consumables

## ABOUT US

### ALCHEMIST SCIENTIFIC Co., Ltd

aim to provide the quality equipment, supplies and service to science community.

In accordance to tradition from the top brand, including:

- Masterflex
- Avantor (VWR)
- Cole-Parmer
- Stakpure
- AS ONE
- Oxford
- Ohaus
- Vilber
- GVS
- ALC



### ALCHEMIST SCIENTIFIC Co., LTD

บริษัท แอลเคมิสท์ ไซออนทิฟิค จำกัด

No. 300/218, Patio Rama 9-Srinagarindra,  
Krung Thep Krittha Road, Hua Mak,  
Bang Kapi, Bangkok, Thailand, 10240

Tel: +66 96 895 3750

E-mail: [cs.alchemist@outlook.com](mailto:cs.alchemist@outlook.com)

Line Official account: @sales.alchemist

Website: [www.alchemistscientificthailand.com](http://www.alchemistscientificthailand.com)



## INDEX

<b>Cole-Parmer®</b> Ultrasonic Processors, SPE, Bead bath, Aspiration pumps, Vacuum pumps, Dialysis Membranes.	Page 3
<b>MASTERFLEX®</b> Peristaltic pumps, Tubing, fitting	Page 4-8
<b>VWR™</b> part of avantor Bioprocessing Solutions: Single-use bottle assembly, Single-use bags, Single-use tubes, Mixing systems	Page 8
<b>AS ONE</b> Laboratory and Industrial selection: Autodry Desiccators, Cool Incubators, Shakers, Water quality tester, etc.	Page 9
<b>stakpure</b> Ultrapure Water and Pure Water Systems	Page 10
<b>G GRANT</b> Circulating water baths, Water baths, Incubator shakers, Shakers, Desitometers	Page 11
<b>OHAUS®</b> Vortex Mixers, Hotplate stirrers, Dry block heaters, pH meters, Bead mill homogenizers, Laboratory balance, Centrifuges	Page 12
<b>OXFORD</b> LAB PRODUCTS USA Micropipettes, Electronic Pipettes, Serological Pipettes, Pipettes Controllers, Shakers, Centrifuges,	Page 13
<b>VILBER</b> Gel Document Imaging, Chemiluminescence Document Imaging, UV crosslinker	Page 14
<b>GVS</b> Syringe filters, Air vent filters, Transfer membranes, Filtering bottles, Cell culture consumables	Page 15
<b>ALC</b> Laboratory furniture, Stem Retorts, Electronic Boilers	Page 15

## Ultrasonic Processors

Microprocessor-Based programming with digital accuracy and repeatability ensures adherence to the most exacting protocol

**Applications:** Sample preparation, cell lysing, disaggregation, homogenization, partial size reduction, acceleration of chemical reactions



### 130 W Ultrasonic Processors

- Use for samples from 150  $\mu$ L to 150 mL
- With timer and pulser mode



### 500- and 750 W Ultrasonic Processors

- Use for samples from 250  $\mu$ L to 1,000 mL
- Integral temperature controller, energy controller, and memory

### Accessories



Probes and tips



Cup Horns



Horns Microtube Holder



Sound-Abating enclosure



Foot switch



Lab jack

## Solid-Phase Extraction (SPE)



### SPE Manifolds 12- or 24-Port

- Flexible sample collection rack will accommodate a variety of receiving vessels.
- Quick vacuum-release valve for better system control.
- Individual valves-release valve for better system control.

### SPE Columns

Normal & reverse phase & ion exchange workup, catch & release & scavenging columns.  
Sorbent: Silica, Si-cyano, C18, C8, Si-TMA chloride, SCX/SAX, etc.

### Accessories

Stopcock, Needle, Frits, Male/Female Luer, Tube adaptor, Empty tubes, etc.

## Bead Baths



### Bead Baths

- Bath is always ready, eliminating warm-up times
- Safer operation than oil baths
- Dry, inert, nontoxic, cleaning, and refilling
- Temperature: Ambient to 80 °C
- Capacity: 6, 14, and 20 L

## Aspiration pumps



### Safe and Convenient handling of liquid waste disposal

- Collection bottle outlet with hydrophobic filter prevents aerosol and liquid contamination
- Parts in contact with liquid can be autoclaved
- Tank Size: 2 and 4 L

## General Laboratory Equipment



### Ultrasonic Cleaners

- Stainless Steel Bath
- LED Display
- Capacities: 2, 3, 6, 9, 13, 20 and 27 Liter
- Temp./time/Controller/ Degas/Drain value



### Vacuum pump

- Flow rate : 28.3 L/min
- Max Pressure : 4.14 bar
- With gauges, regulators, adjustable relief valve



### Colony Counters

- Audible count confirmation
- Read individual plates or calculate an average over multiple plates
- two 50- to 90-mm dish centering adapters



### Micro-90 Cleaning Solution

- Removes most biological materials



### pH Buffer and other solutions



### Dialysis membranes

- Ideal for concentration, purification and desalination
- MWCO Cut off : 0.5 to 100 kDa



Positive Displacement

Microflow Ismatec Series  
> 0.0001 to 300 mL/min



High-Accuracy  
L/S Series > Up to 5 LPM

Scale-up Simplicity

Powerful Systems I/P Series  
> Up to 26 LPM

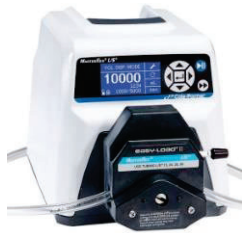


Robust Connectivity

Highest Flow Rate B/T Series  
> Up to 42 LPM



## L/S Series: Laboratory Peristaltic pumps



### Digital pumps

- Max rpm: 100 or 600 rpm
- Flow rate :  
0.06 to 580 mL/min (for 100 rpm)  
0.006 to 3400 mL/min (for 600 rpm)
- Pump Head Accepted : 1 to 4
- Programmable
- IP33 or 66
- Real-time pump control and monitoring with MasterflexLive



### Modular Dispensing Drive

- Digital interface with graphical LCD display
- Remote control available using analog communication:  
Voltage, current and contact closure
- Modular Drive with Benchtop controller and Wall-mount controller



### Stainless Steel Housing pumps

- Control parameter with digital display
- NEMA 4X housings stand up to process and washdown applications
- IP66

### Applications:

- Media preparation
- Fluid metering, feed, and transfer
- Acid/base pH control
- Sterile filtration and fluid transfer
- Automated fluid transfer
- Food/beverage and dairy process etc.

### Applications:

- Pharma/Biopharma Process
- Fluid metering, feed, and transfer
- Plant automation
- Foods/Chemicals/Water/Agricultural Industrial
- etc.

### Applications:

- Pharma/Biopharma Process
- Media preparation
- Foods/Chemicals/Water/Agricultural Industrial
- etc.

## L/S MasterSense Series: Laboratory Peristaltic pumps

New model



### Reimagine fluid handling-operate, collaborate and connect with ease

- Intuitive touch-screen interface – quick and easy to program
- Operational models include continuous run, volume dispense, and time dispense
- Secure three-tier access to pump functionality
- Choice of connectivity options – MasterLive, EtherNet/IP

### Features

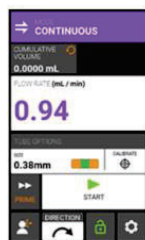
- Display: 5" TFT/RGB touch Screen.
- RPM: 100 and 600 rpm
- Flow rate  
100 rpm: 0.001 to 580 ml/min  
600 rpm: 0.006 to 3400 ml/min

### Applications:

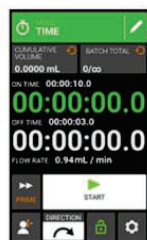
- Pharma / Biopharma processing
- Foods/Chemicals/Water/Agricultural Industrial
- R&D, and all liquid lab transfer etc.

Save and recall up to 50 commonly used protocols, each with a unique name

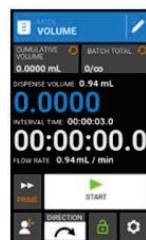
intuitive touch-screen interface



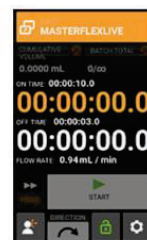
Continuous Mode



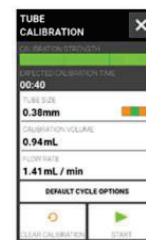
Time Mode



Volume Mode



Remote Mode



Tube Calibration



User Access



## I/P Series: small pilot scale Peristaltic pumps



### Compact pumps

- RPM : 0.1 to 650 rpm
- Flow rate : 0.0006 to 26 LPM
- Pump Head Accepted : up to 2
- Programmable
- IP33 or 66
- Real-time pump control and monitoring with MasterflexLive

### Applications:

- Dispensing and filling
- Chromatography
- Gel column pump
- Spectrophotometer pump
- etc.



### Stainless Steel Housing pumps

- Control parameter with digital display
- NEMA 4X housings stand up to process and washdown applications
- IP66

### Applications:

- Pharma/Biopharma Process
- Foods/Chemicals/Water/Agricultural Industrial
- Filtration system
- Gel column pump
- etc.



### Modular Dispensing Drive

- Digital interface with graphical LCD display
- Remote control available using analog communication: Voltage, current and contact closure
- Modular Drive with Benchtop controller and Wall-mount controller

### Applications:

- Pharma/Biopharma Process
- Foods/Chemicals/Water/Agricultural Industrial
- etc.



### Washdown Drive System

- Flow rate up to 2.2 LPM per channel (depend on drive, pump head and tubing size)
- Fixed speed
- IP55

### Applications:

- Multi Dispensing and filling
- Foods/Chemicals/Water/Agricultural Industrial
- etc.

## B/T : The Pilot Scale Peristaltic pumps

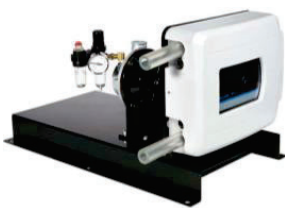


### Modular Dispensing Drive

- Flow rate : 0.3 to 42 LPM
- Digital interface with graphical LCD shows pump performance and operating mode – continuous run, timed dispense, copy dispense, or volume dispense
- Remote control available using analog communication: Voltage, current and contact closure
- IP56

### Applications:

- Dispensing and filling
- Pharma/Biopharma Process
- Foods/Chemicals/Water/Agricultural Industrial
- all liquid lab transfer
- etc.



### Variable speed and air-powered analog Drives

- Flow rate : up to 42 LPM
- Rapid-Load pump head occlusion mechanism slides occlusionbed out of the way for easy tube loading and improved tubing occlusion
- Use air-powered drive in locations where electricity is unsafe
- Rated for ATEX Zone 2, etc.
- IP56

### Applications:

- Oil and Gas industrial
- All explosion proof lab and process
- etc.

Drive

+

Pump Head

+

Tubing

=



## Ismatec: Peristaltic pumps



### Independent Channel Control (ICC) Pumps

Pump each Channel at different speeds and directions

- 2-, 3-, 4-Channels
- 6, 8, 12 Rollers
- Speed: 0.1 to 100 rpm
- Flow rate: 0.0001 to 43 mL/min per channel

ISMATEC



### High Precision Multichannel Dispenser (ICP) Pumps

Low-flow, high-accuracy pumps provide repeatable results

- Flow rate: 0.0015 to 44 mL/min or 0.00039 to 11 mL/min
- No. of rollers: 8

ISMATEC



ISMATEC

### Ismatec Tubing : 2-, 3- stop and extension Tubing Materials:

Puri-Flex, Puri-Prene, Puri-Clear LL, Silicone (Platinum-cured), Silicone (Peroxide-cured), C-Flex, PharMed BPT, Chem-Durance, Tygon, Viton, Solva, Versilion, GORE

## Ismatec Reglo: Peristaltic pumps



New

### Digital Multichannel pumps

- 5" TFT Touch screen
- Continuous run, volume dispense, and time dispense modes
- Flow rate (per channel): 0.001 to 68 mL/min
- Number of Channel: 2 or 4
- Number of Rollers: 6, 8 and 12
- Flexible operate control via screen, MasterflexLive, or analog remote control



### Digital single channel pumps

- 5" TFT Touch screen
- Continuous run, volume dispense, and time dispense modes
- Flow rate: 0.16 to 365 mL/min
- Number of Channel: 1
- Flexible operate control via screen, MasterflexLive, or analog remote control



### Gear pump and Piston pump

Achieve high pressure and accurate, pulseless flow – with an intuitive touch-screen interface

- Flow rate: 0.025 to 5840 mL/min
- Max pressure: up to 20.7 bar (300 psi)

MASTERFLEX ISMATEC

## Pump Heads: for L/S, I/P and B/T series



### Easy Load

- New design automatic tubing retention allow for multiple tubing sizes
- Rotor is constructed of stainless steel
- Pump head are stackable for multichannel applications



### Easy Load II (1- or 2- channels)

- New design automatic tubing retention allow for multiple tubing sizes
- Rotor is constructed of stainless steel
- Pump head are stackable for multichannel applications



### Easy Load 3

- Same side tubing entry/exit permits easy integration into space-limited
- Twist-lock mounting feature lets you mount and stack heads in seconds



### Multichannel pump heads

- Get low-pulsation synchronous flow in multiple channels without cartridges
- Flow range 0.045 to 2300 mL/min per channel



### PTFE tubing head pump

- Ideal for high-purity fluids and aggressive organic solvents
- PTFE tubing is the only wetted part ensuring fluid purity and excellent chemical compatibility



New

### Cytoflow pump heads

- The best option for pumping live cells and shear-sensitive fluids
- Ensure the survival and vitality of live cells



New

### Easy load II with open-head sensor

- Available with integrated open-head sensor-connects directly to sensor-equipped drives



New

### Quattroflow pump Heads

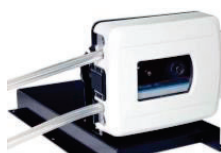
- No mechanical seal or rotating parts that can fail – only the diaphragm and body come in contact with the fluid
- Single-use pump heads are constructed with a disposable PP Chamber



New

### Ultrapharm pump Heads

- This pump head produces gentle, low pulse and highly accurate dosing and flow to ensure optimal integrity and uniformity.
- Autoclavable; tested to 10 cycles without any loss of flow or accuracy performance



### B/T Rapid-Load Pump Head

- Newly designed occlusion mechanism slides occlusion bed out of the way for easy tube loading and improved tubing occlusion
- Interlock switch shuts off power to stop drive when door is opened

## Peristaltic pump tubing

### Masterflex Pump tubing for a wide range of Applications and Markets:

Pharmaceutical, Medical research, Industrial, Biotech, Chemical processing, Water treatment, Printing, Food & Beverage, Environmental and Semiconductors



Silicone  
(Peroxide-cured)



Biopharm Silicone  
(Platinum-cured)



PharMed BPT



Tygon E-FL



Versilon 2001



Viton



Silicone  
(Platinum-cured)



Biopharm Plus Silicone  
(Platinum-cured)



PharmaPure



Tygon E-Food



Versilon A-60-N



Solva



Puri-Flex



C-Flex



Chem-Durance Bio



Tygon E-Lab



GORE STA-PURE PCS



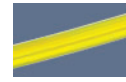
Puri-Prene



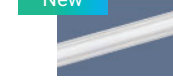
C-Flex Ultra



PTFE



Tygon Fuel&Lubricant



GORE STA-PURE PFL



Masterflex pump Tubing is custom extruded to fit Masterflex pumps and engineered for long life in peristaltic pump applications.

**Advantages:** Biocompatible, Ultra-smooth, Great for tissue and cell work, Chemical resistance, Heat sealable, etc.

**Classifications:** USP Class VI, FDA, RoHS, REACH, ADCF, European Pharmacopoeia, NSF, etc.

**Sterilization:** autoclave, EtO, gamma irradiation

L/S Precision Tubing							L/S High-Performance Tubing			
Tubing No.	L/S 13	L/S 14	L/S 16	L/S 25	L/S 17	L/S 18	L/S 15	L/S 24	L/S 35	L/S 36
ID	0.8 mm	1.6 mm	3.1 mm	4.8 mm	6.4 mm	7.9 mm	4.8 mm	6.4 mm	7.9 mm	9.7 mm
Hose barb size	1.6 mm	1.6 mm	3.2 mm	4.8 mm	6.4 mm	9.5 mm	4.8 mm	6.4 mm	9.5 mm	9.5 mm
Flow rate (mL/min)	0.06 to 36*	0.21 to 130*	0.8 to 480*	1.7 to 1000*	2.8 to 1700*	3.8 to 2300*	1.7 to 1000*	2.8 to 1700*	3.8 to 2300*	4.8 to 2900*

\* Flow rate (approximate) with 1 to 600 rpm

I/P Precision Tubing				I/P High-Performance Tubing			B/T Perfect Position tubing	
Tubing No.	I/P 26	I/P 73	I/P 82	I/P 70	I/P 88	I/P 89	B/T 87	B/T 91
ID	6.4 mm	9.5 mm	12.7 mm	9.5 mm	12.7 mm	15.88 mm	12.7 mm	19.0 mm
Hose barb size	6.4 mm	9.5 mm	12.7 mm	9.5 mm	12.7 mm	15.88 mm	12.7 mm	19.0 mm
Flow rate (L/min)	0.01 to 4*	0.01 to 8*	0.02 to 13*	0.01 to 8*	0.02 to 17*	0.03 to 19*	0.67 to 18.9**	1.4 to 42**

\* Flow rate (approximate) with 1 to 650 rpm

\*\* Flow rate (approximate) with 11 to 321 rpm

## Accessories

New



### MasterSense Pressure Sensor Adaptors

Install sensors downstream of pump to detect static and dynamic process pressure and to avoid downtime.



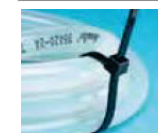
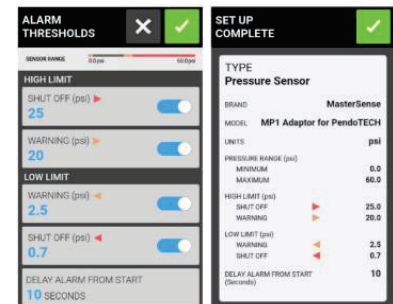
### Ultrasonic Flow Sensors

Specifically calibrated for use with Masterflex L/S and I/P silicone tubing.



### Mounting Hardware

Mount up to 2, 3 or 4 for L/S Easy Load II pump heads one a single Drive



### Autoclavable Cable Ties

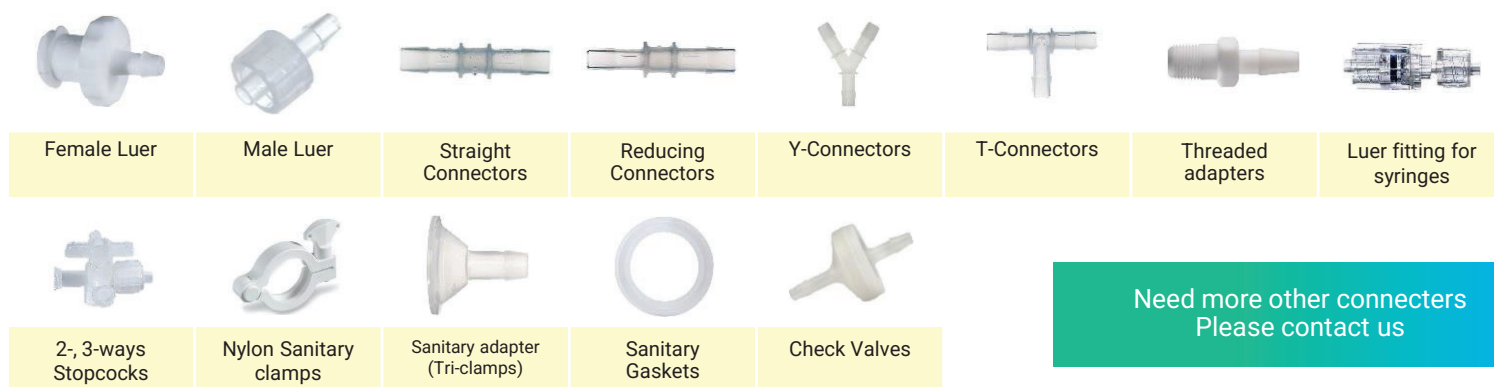
Polypropylene (PP) cable ties resist a number of chemicals and are UV-resistant



Masterflex peristaltic pump system provide superior accuracy and repeatability and ensure optimal performance when used with the proper tubing.

**Sterilization:** autoclave , ethylene oxide or gamma irradiation  
**Materials:** PP, PC, PE, PSF, PVDF, Nylon, etc.

## Fitting and Connectors



**Avantor®'s** bioprocessing solutions focus on what matters most for your operations. We offer a unique combination of industry expertise and a broad portfolio of bioprocessing products and materials. Our products are engineered and manufactured to satisfy the highest quality standards and regulatory requirements for your final product – whether it's a vaccine, monoclonal antibody, recombinant protein, cell therapy, or gene therapy.

## Bioprocessing



### Single-Use Sampling Bottle Assemblies

- Safely transfer, sample and store biopharmaceutical products and reagents.
- Pre-sterilized by gamma irradiation
- Includes clear PETG bottle, C-Flex tubing and 0.2 micron vent filter.
- Capacity: 125 to 2000 mL



### Single-Use 2D and 3D Bags

- Bioprocessing bags are designed to transfer and store your products throughout the drug-manufacturing process.
- Bag assemblies provided irradiated with SAL 10<sup>-6</sup> and USP Class VI certification.
- 2D and 3D bag assemblies are available with C-Flex tubing with plugged ends for welding and silicone tubing with either luer or MPC connectors for easy operator connections.
- Size: 500 mL to 20 L



### Single-Use Sample Tubes

- Pre-sterilized by gamma irradiation
- Product contact materials are USP Class VI compliant and ADCF
- Includes C-Flex tubing, Pinch clamp, cap, O-ring and 0.2 Vent filter.
- Volume: 15 and 50 mL



### Single-Use Tank Liners

- single-use bags with a open top, designed to fit in cylindrical vessels.
- Tank liners are available in both 2D and 3D style.
- Pre-sterilized by gamma irradiation
- Certification: USP class VI and ADCF
- Capacity: 19 to 560 L



### Single-Use Sample Tubes

- Pre-sterilized by gamma irradiation
- Provided gamma irradiated to sterility assurance level SAL 10<sup>-6</sup>
- When used with sterile VWR bottle assemblies, custom possibilities are endless.
- Available with weldable/sealable tubing
- Tube size: C-Flex 1/8"x1/4" and 3/8" x 1/2"



### Top Mixing Systems

- Modular Mixing System with top mounted mixer for use with drums including a single use liner for your biopharma processes with integrated formulation programming.
- Programmable control enables automation
- Capacity: up to 200 L and up to 560 L



### Single-Use Tubing Pinch Clamps

- Clamps are double bagged and ready for use in your cleanroom environment.
- Validated to USP Class VI
- Feature anti-tamper zip-tie lock out
- Sterilizable via autoclave or gamma irradiation



### 3D Cubic Bag Containers

- These 3D cubic bags can fit in existing support containers, but can also be supplied together with a matching container made of plastic or stainless steel.
- 3D cubic bags are available in 200 and 500 L volume with 2 ports on top of the bag. Both ports consisting of silicone platinum tubing with MPX-connectors.



### Centrifuge Tubes

- Disposable conical-bottom centrifuge tube are made of high-quality, UPS Class VI
- Volume: 15 mL and 50 mL
- max rpm: 12,500 rpm
- RNase-free, DNase-free and non-pyrogenic

Complete our request form to learn about custom solutions for your biopharmaceutical manufacturing operation.



## Autodry Desiccators and Vacuum Desiccators



### Autodry Desiccators

- Auto dry type
- Material: Acrylic
- Reaching Humidity: 25% rH
- Dehumidifying: element membrane area 30x30 mm
- Capacity: 28 L



### Autodry Desiccators

- Auto dry type
- Material: Acrylic (cutting 520 mm or less)
- Reaching Humidity: 25% rH
- Dehumidifying: element membrane area 30x30 mm
- Capacity: 28 L



### Vacuum Desiccators

- Vacuum Desiccator type
- Material: Acrylic (thickness: 25 mm), valve vacuum gauge
- Allowable vacuum 1 torr (133 Pa)

## Laboratory equipment



### Cool Incubators

- Cooling and Heating: Peltier element
- Temp: 3 to 45 °C
- Capacity: 28 L
- Power supply: 100-240 V, 50/60 Hz



### Water Activity Meters

- Measurement: 0 to 1.0 Aw
- Resolution: 0.01 Aw
- Main Unit Material: SUS304
- Model: Measurement only / memory and Logging



### Underwater stirrer

- Positions: up to 6
- Speed: 20 to 1500 rpm
- Stirrer size: dia. 120 mm.
- Capacity: up to 1 L



### Gas Displacement Type Glovebox

- For pass box gas displacement can be performed by purging.
- Body is equipped with safety valve for positive pressure to ensure safety.



### Hotplate (Large size)

- Plate material: Aluminum
- Max temp.: 300 °C
- Plate size: 400x300 mm.



### Large capacity stirrer

- Plate material: Stainless steel
- Speed: 50 to 1400 rpm
- Stirred capacity: 1 to 50 L



### Vertical and Horizontal Shakers

- Speed: 300 rpm
- Shaking width: 40 mm
- Timer: 0 to 60 min



### Mini Peristaltic pumps

- Flow rate: up to 1000 mL/min
- Speed: up to 150 rpm
- Roller: 2
- Compatible tube material: Silicone, Tygon, Pharmed



### Hybridization Incubators

- Temp: ambient + 5 to 80 °C
- Shaking system: Bottle rotation type, Tube Falls rotation type, seesaw shake type
- Speed: 7 to 40 rpm



### Viscometer

- The measurement results are displayed in real time
- Selectable four viscosity display units
- Measurement range: 1 to 2 M mPa\*s and more
- Temp: 0 to 100 °C
- Speed: up to 60 rpm



### Vial Evaporators

- It is possible to continuously supply the sample with the needle and perform evaporation at the same time
- Vial: 10 ml x 12 bottles
- Speed: 60 to 500 rpm
- Temp: ambient + 5 to 120 °C



### Refrigerators

- Equipped with a digital temp. front display
- The glass door uses double glass to improve energy efficiency.
- Temp: 3 to 10 °C



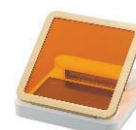
### Handheld Homogenizers

- Designed to homogenize cells and plant tissue or to re-suspend protein and DNA pellets.
- Max speed: 7800 rpm



### Gel electrophoresis

- Tank size: 183 x 59 x 56 mm
- Out voltage: 18 to 135 V
- Timer: 0-99 min setting or continuous
- Memory: yes



### UV Transilluminators

- The cover can be fastened anywhere and the gel cutting operation is easy
- Blue LED specification with long life and less DNA damage

## Laboratory consumables



### Water Quality Tester "PackTest"

pH/COD/Chlorine/Silica/Iron/Sulfide/Chloride/Ozone/Nitrogen/etc.



### Membranes, Paper Filters, Ultrafiltration membranes, etc.



### 15- and 50 mL Centrifuge tubes

DNase/RNase/Pyrogen-free  
Centrifuge strength: 20,000 G



### 225- and 500 mL Centrifuge tubes

DNase/RNase/Pyrogen-free  
Centrifuge strength: 6,000 G



### Homogenizer Pestles

DNase/RNase/Pyrogen-free.  
For 1.5 mL and 5 mL tubes



### Autoclavable Spray

Ethanol for disinfection an invert soap can be used.  
500 mL



### Cuvettes

Glass, Quartz, PS or PMMA



### Laboratory Carboys



### Sterile containers (USP Class VI)

- A variety of connections are possible in a closed system, and by using the 3-port connector ASSY (optional), Material: PE
- Capacity: up to 20 L



### Sterile Sampling Scoops



### Tubing Stoppers



### Silicone tubings

It keeps elasticity from -60 to 120 °C and is resistant to hot water and chemical

## Ultrapure and Pure Water

**OmniaTap** is the ideal system when both **ultrapure water** and **pure water**, but in relatively small amounts

**Features:**

- OptiFill dispenser is standard
- Pretreatment set for direct connection to tap water
- 10-litres pure water tank
- Fully recirculation
- Leakage sensor is standard

**Water quality:**

- Type II: up to 10-15 MΩxcm
- Type I : 18.2 MΩxcm

**Flow rate:**

- Type II: 6 or 12 L/hr.
- Type I: up to 2.0 L/min

**3 different models:**

- OmniaTap,
- OmniaTap UV,
- OmniaTap UV/UF



**OmniaLab<sup>ED+</sup>** is the larger allrounder for the complete laboratory.

The perfect 100 L tank system for both Type II and Type I applications.

**Features:**

- OptiFill dispenser is standard
- Continuous residual salts removal by EDI
- Leakage sensor is standard
- UV lamp is standard

**Water quality:**

- Type II: up to 10-15 MΩxcm
- Type I : 18.2 MΩxcm

**Flow rate:**

- Type II: 20, 40, 70 L/hr.
- Type I: up to 2.0 L/min

## Ultrapure Water with real-time TOC monitoring

**OmniaPure *xs<sup>touch</sup>* Blue line** is for highest quality pure water that fulfils the demands of analytical and life science laboratory.

**Features:**

- OptiFill<sup>touch</sup> dispenser is standard
- Real time TOC monitoring
- Fully recirculation
- Resource-saving filter volume
- Leakage sensor is standard

**Water quality:**

- Type I : 18.2 MΩxcm

**Flow rate:**

- Type I: up to 2.0 L/min

**2 different models:**

- OmniaPure *XS<sup>touch</sup>* UV-TOC,
- OmniaPure *XS<sup>touch</sup>* UV-TOC/UF



## Ultrapure and Pure Water with real-time TOC monitoring

**OmniaTap *xs<sup>touch</sup>* Blue line** is the ideal system when both pure water and ultrapure water are required, but in relatively small amounts.

**Features:**

- OptiFill<sup>touch</sup> dispenser is standard
- 7-litres pure water tank
- Real time TOC monitoring
- Fully recirculation
- Leakage sensor is standard

**Water quality:**

- Type II: up to 10-15 MΩxcm
- Type I : 18.2 MΩxcm

**Flow rate:**

- Type II: 8 L/hr.
- Type I: up to 2.0 L/min

**2 different models:**

- OmniaTap *XS<sup>touch</sup>* UV-TOC,
- OmniaTap *XS<sup>touch</sup>* UV-TOC/UF



## Circulating Water Baths



### Circulating Water Baths

- Cooling/heating range: -15 °C to 200 °C
- Stability: up to  $\pm 0.01$  °C
- Tank capacities: 5, 12, 18, 26 and 38 L
- Tank Material: Stainless Steel



### T100 / T120

- Stability:  $\pm 0.05$  °C
- Integral pump for external circulation (TC120 only)
- Low-liquid detection
- Temp range:  
T100: Ambient + 15 to 100 °C  
T120: 0 to 120 °C

### TX150 / TXF200

- Stability:  $\pm 0.01$  °C
- Integral pump for external circulation
- Programmable
- Low-liquid detection
- Temp range:  
TX150: 0 to 150 °C  
TXF200: 0 to 200 °C

## Water Baths



### Water Baths

- Temp: ambient + 5 to 99 °C
- Resolution: 0.1 °C
- Stability:  $\pm 0.2$  °C
- Tank Material: Stainless Steel
- Tank capacities: 2, 5, 12, 18, 26 and 34 L

## Shaking Water Baths



### Shaking Water Baths

- Temp: ambient + 5 to 99 °C
- Stability:  $\pm 0.1$  °C
- Speed: 20 to 200 rpm
- Tank Material: Stainless Steel
- Tank capacities:  
Liner: 12, 18 L  
Orbital and Liner: 26 L

## Laboratory Equipment



### Densitometers

- DEN-1 and DEN-1B for measuring turbidity of cell suspensions in a variety of life science applications
- Turbidity in the range of McFarland units

New



### CO<sub>2</sub> Shakers

- Provides regulated orbital motion of the platform and is designed for use specifically in CO<sub>2</sub> incubators.
- Speed: 50 to 250 rpm
- Timer: 1 min to 96 hours
- Orbit: 20 mm.



### PCR UV Cabinets

- Built-in patented UV lamp
- UV-protective film on glass panels
- Front opening with three adjustable positions
- Stainless steel frame and working area



### Orbital Shakers

- Suitable for use in different laboratories in microbiology, chemistry, immunology, biochemistry and molecular biology
- Loads: up to 8 kg
- Speed: 20 to 250 rpm
- Orbit: 20 mm



### Block Heater and Thermoshakers

- Provides intensive mixing and temperature control of sample in microtubes or PCR tubes
- Cooling and/or heating
- 5 variety blocks size for the tubes



### 2D and 3D Rotators

- Designed for laboratory work in the areas of biochemistry, immunochemistry, microbiology and genetic engineering
- Speed: 1 to 100 rpm
- Ambient operating temperature range of 4 to 40 °C allows use in cold room or incubators.



### Shaking Incubators

- Temperature range: 5 °C above ambient up to +80 °C
- Speed control: 50-400 rpm
- Up to 3 units can be stacked



### 360° Rotators

- It is an ideal instrument for preventing blood coagulations, for extraction, diffusion and dialyzing biological liquid in test tubes.
- 360° vertical rotation
- Speed: 5 to 30 rpm





OHAUS Corporation is a global leader in manufacturing an extensive line of weighing products, laboratory equipment and analytical instruments that meet and surpass the weighing and measurement needs of a broad range of industries, including laboratory, industrial, educational and food preparation.

## pH meters



### pH meter – Aquasearcher™

The next step in evolution of OHAUS original starter series.

- AB41PH: High accuracy, GLP, 1000-item memory, Touch keypad, selectable resolution from 0.1 to 0.001

## Hotplate Stirrers



### Hotplate stirrer – Guardian2000

Rugged and reliable analog hotplates and stirrers for general purpose heating and stirring

- Top plate: Ceramic
- Working area: 17.8 x 17.8 cm
- Max load: 15 L
- Speed: 200 to 1600 rpm
- Temp.: 70 to 500°C

## Vortex Mixers



### Vortex Mixer – VMXNAL

- Controller: analog
- Speed: 300 to 2500 rpm
- Orbit: 4.9 mm
- Weight: 4 kg

## Block Heaters



### 1-, 2- Block Dry block Heaters

Versatile block heaters designed for everyday use with accessories for every application

- Display: LED display
- Temp: Ambient +5 to 120 °C
- Stability: +/- 0.2 °C
- Uniformity: +/- 0.1 °C

## Moisture Analyzers



### Moisture Analyzers - MB90

Simple Operation, Precise results

- Halogen heating increases efficiency for faster results.
- Intuitive touchscreen menu offers step-by-step
- Capacity: 90 g
- Moisture: 0.01 to 100%
- Temp: 40-200 °C

## Lysing Bead Mill Homogenizer



### HT Lysing Bead Mill Homogenizer

- Applications: DNA, RNA and Protein analysis (tissue, plant, fungi, yeast, virus and other cells)
- LED display allows the operator to view speed and time settings.
- 5 pre-set program buttons and touchpad controls for speed and time
- Speed Range: 300 to 1600 rpm
- Capacity: 1 deep well plate, 4 microplates, or any sample matrix that can fit in the adjustable holder.

## Laboratory Balances



2-digi

**Precision Balances**  
Readability: 0.01 g



3-digi

**Precision Balances**  
Readability: 0.001 g



4-digi

**Analytical Balances**  
Readability: 0.1 mg



5-digi

**Semi-Micro Analytical Balances**  
Readability: 0.01 mg

## Benchtop Centrifuges



### Frontier 5000 series

Reliable and compact multi-function centrifuges ideal for general lab applications

- Speed range: 200 to 6000 rpm
- Max capacity: 6 x 50 mL
- Time: 10 sec to 99 hr 59 min 59 sec or continuous

## Centrifuge Rotors



Fixed rotor: 12 x 15 mL  
(Max rpm.: 6000 rpm)



Swing out rotor: 6 x 5 mL  
(Max rpm.: 4000 rpm)



Fixed rotor: 6 x 50 mL  
(Max rpm.: 6000 rpm)

## Liquid Handlings



### Single channel Pipettes

- Volume lock setting to prevent accidental volume drifts
- Highly durable material for corrosion and physical shock resistance
- Universal tip compatibility
- Fully autoclavable



### Multichannel Pipettes

- Volume lock setting to prevent accidental volume drifts
- Highly durable material for corrosion and physical shock resistance
- Universal tip compatibility
- Fully autoclavable
- No of channels: 8, and 12



### Electronic Pipettes

- Simple, color interface to quickly choose pipetting mode
- Ultra lightweight
- Universal tip cones
- Microprocessor controlled aspirating and dispensing
- No of channel: 1, 8 and 12 channels



### Pipette Controller

- Convenient push button controls
- Multiple dispensing mode
- Easily cleanable
- NiMH Battery



### Dispensers

- Made of chemical-resistant materials, such as PTFE and PFA is the ideal choice for dispensing bases, acids and solvents.
- Autoclavable
- Volume: 2.5, 5, 10, 30, 60 mL



### Serological Pipettes

- Comes with filter barrier to stop overflow of liquid into the pipette
- DNase/RNase, pyrogenic, latex, and cytotoxic free
- Sterile and available in individually packed in peel-to-open plastic/paper wrap packaging
- Volume: 1, 5, 10, 25 mL

## Centrifuges



### Spin-down Centrifuge (C8)

- Compact design saves valuable bench space
- Fixed speed 6,000 rpm
- Included:
  - 8x1.5/2.0 mL fixed rotor
  - PCR tube rotor
  - 0.5 mL Tube adaptor



### High Speed Centrifuge (C12V)

- Compact design saves valuable bench space
- LCD Display
- Easy to set and view programs
- Max speed: 15,000 rpm
- Included: 12x1.5/2.0 mL fixed rotor



### Clinical Centrifuge (C6V)

- Easy to clean drain in case sample spillage
- Max speed: 6,500 rpm
- Max Capacity: 6 x 15 mL
- Fully autoclavable rotor

## Shakers, Rotators and Stirrers



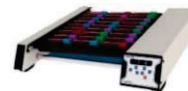
### Microplate Shaker

- 2mm Orbital Diameter with a powerful motor that allow up to 1800 rpm
- Microprocessor-controlled
- Every unit also includes a microtube attachment for 1.5/2.0 mL



### Digital Tube Rotator

- 3 plate Options available – compatibility for 5, 15 and 50 mL tubes
- Speed: 10 to 80 rpm
- Angle: 0 to 90 degrees.
- The disc plates are easily removed and replaced



### Tube Rollers

- Pulse model for optimal mixing
- Digital Display
- Programmable
- Speed: 10-80 rpm
- Max Capacity: 27x7 mL



### Orbital Shaker

- Speed: 50-500 rpm
- Orbital: 10 mm / 20 mm
- Timer: 1 min to 99.59 hr
- Motion: clockwise and counterclockwise



### 4-Positions Stirrers

- Max capacity: 400 mL/Position
- Speed: 15 to 1200 rpm
- Timer: 1 to 99 mins
- Mode: Pulsed, Time interval and Continuous



### 5- or 10-Positions Hotplate Stirrers

- Max capacity: 400 mL/Position
- Positions: 5 or 10
- Speed: 300 to 1500 rpm
- Timer: 1 to 999 mins & Continuous
- Temp: up to 120 °C

## NanoEnTek

**EVE™** uses state-of-the-art optics and image analysis for cell counting. It is a benchtop sized counter, designed to measure live, dead and total counting with accuracy and precision.

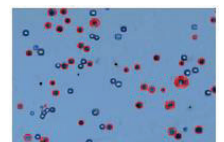
### Automatic Cell Counter

Applicable for broad range of cell sizes and types from Primary (tissue, blood) cell lines to stem cells)

- 500 test results storage
- Transfers the data to PC using USB drive
- Cell size gating function by select range of cell size

### Specifications

- Counting time: < 20 seconds
- Cell measurement range:  $1 \times 10^4$  to  $1 \times 10^7$  (cells/mL)
- Cell size range: 5 to 60  $\mu$ m



## Gel Documentation Imaging



The **Quantum** is the laboratory standard for **DNA and protein gel imaging**. The system is based on an advanced set of performance ideal to achieve high fidelity and quantitative scientific measurement.

- up to 6 excitation channels in the UV and visible area.
- A **large number of dyes could be used such as** Ethidium Bromide, Sybr-Safe, Sybr Green, Gel-Red, Gel-Green, Sybr-gold, etc.
- Scientific grade camera : Up to 20 megapixels, 16-bit, Scientific TIFF file or proprietary file format, Motorized zoom lens with feedback

## Chemiluminescence & Fluorescence Documentation Imaging



The **FUSION Solo S** is a high-end ultra sensitive scientific optical system, designed to extract the lowest level of detection from your protein.

- Automatic imaging mode compensates the time course of the chemiluminescence reaction by adjusting the exposure time while maintaining the larger possible image dynamic.
- includes our unique Apps Studio approach to imaging. The Apps Studio is a library which contains **40 different protocols for your blot, gel and other bioluminescence samples**. The protocol oriented Apps Studio ensures reproducibility and one click acquisition for the best ease of use.



The **FUSION FX** is ideal for quantification grade imaging. **Chemiluminescent blotting** data poses distinct challenges in producing quantifiable, reproducible data.

- Automatic imaging mode compensates the time course of the chemiluminescence reaction by adjusting the exposure time while maintaining the larger possible image dynamic.
- includes our unique Apps Studio approach to imaging. The Apps Studio is a library which contains **40 different protocols for your blot, gel and other bioluminescence samples**. The protocol oriented Apps Studio ensures reproducibility and one click acquisition for the best ease of use.

## UV Crosslinker



The **Bio-Link** is a UVA, UVC or UVB irradiation system, mainly dedicated to binding of nucleic acid to membranes and the removal of contamination by PCR.

- Precise irradiation in energy (Joules/cm<sup>2</sup>) or time (seconds)
- Present program for 0.120 J/cm<sup>2</sup> to optimize nucleic acid binding
- Spacious stainless steel UV exposure chamber
- Interchangeable UV wavelengths



The **Bio-Sun** irradiation system, the emission of the UV light is constantly monitored by a microprocessor. The irradiation stop automatically when the dosis (energy) received matches the energy programmed.

- Large irradiation area, homogeneously illuminated
- Irradiation time less than 40 seconds for a programmed dosis of 150 mj/cm<sup>2</sup>
- Up to 6 UV measurements per second

## UV Darkrooms (for Thin Layer Chromatography)



The **UV darkroom** provide a large effective capacity and a high detection sensitivity. For this purpose it can be equipped with one or to increase intensity and homogeneity with two UV hand lamps of the model. The wavelengths can be freely selected, 254 nm, 312 nm, 365 nm or combined. Suitable lamps are available separately.





**GVS Filter Technology** offers a full line of Laboratory Filtration and analysis products, providing an incomparable experience for the customer in the analytical, chemistry and life science laboratories.

## Syringe Filters



- **Type:** Sterile and non-sterile
- **Membrane:** CA, NY, MCE, PES, PTFE, PE, RC, PVDF
- **Pore size:** 0.22, 0.45, 0.80, 1.20, 5.00  $\mu\text{m}$
- **Housing Diameter:** 13, 25 mm
- **Housing:** Acrylic, PP

## Air vent filters (sterile)



- **Membrane:** Hydrophobic PTFE
- **Pore size:** 0.45 and 0.22  $\mu\text{m}$
- **Connectors:** 6 to 12 mm stepped barb
- **Housing Diameter:** 63 mm
- **Sterilization:** autoclave or ETO

## Bottle Top Filters



- **Membrane Material:** PES, NY, MCE, PVDF and CA
- **Sterile**
- **Pore size:** 0.22, 0.45
- **Capacity:** 150, 250, 500, 1000 mL

## Syringeless Filters



### Rapid sample preparation

Single step process, filtering with a plunger in vial

- Sample ready to use after filtration
- **Pore size:** 0.20 and 0.45  $\mu\text{m}$
- **Housing:** Polypropylene (PP)
- **Membrane Material:** NY, RC, PTFE, PVDF, PES

## Transfer Membranes



Choice for all protein or blotting applications: Western blotting, Northern blotting, Southern blotting, Chemiluminescent, Immunoblotting, UV crosslinking, etc.

- **Membrane:** Nitrocellulose, Supported Nitrocellulose, PVDF, Neutral Nylon, Reprobing Charged Nylon
- **Pore size:** 0.45 and 0.22  $\mu\text{m}$

## Vacuum pump



- **Included** Moisture trap with filter cartridge
- **Oil-free**
- **Max. flow rate:** 17 LPM
- **Max. Vacuum:** 100 mbar

## Cell culture Labware



Multi-well cell culture plate



Cell culture dish



Cell culture flask



Baffled Erlenmeyer flask



Media bottle



Multi-layer cell factory



Roller bottle



Close Sampling Systems



Flake and spherical microcarrier

Contact us  
for  
free  
sample request

**ALC**

ALC offers a full line of Laboratory Furniture, Steam Boilers and Retorts



Laboratory Furniture



Retorts



Steam Boilers



## ALCHEMIST SCIENTIFIC COMPANY LIMITED



**ALCHEMIST SCIENTIFIC Co., LTD**  
บริษัท แอลเคมิสต์ ไซเอนติฟิค จำกัด  
No. 300/218, Patio Rama 9-Srinagarindra,  
Krung Thep Krittha Road, Hua Mak,  
Bang Kapi, Bangkok, Thailand, 10240

**Contact us**  
Tel: +66 96 895 3750  
E-mail: [cs.alchemist@outlook.com](mailto:cs.alchemist@outlook.com)  
Line Official account: @sales.alchemist  
Website: [www.alchemistscientifichailand.com](http://www.alchemistscientifichailand.com)