



About us

ALCHEMIST SCIENTIFIC Co., Ltd aim to provide the quality equipment, supplies and service to science community. In accordance to tradition from the top brand, including **Anatylia (Cole-Parmer/Masterflex/ Ismatec and others), GVS and Stakpure.**

บริษัท แอลเคมิสต์ ไซออนตีฟิค จำกัด เป็นตัวแทนจำหน่ายเครื่องวิทยาศาสตร์ สำหรับห้องปฏิบัติการวิทยาศาสตร์ แบบנד Anatylia (Cole-parmer, Masterflex, Ismatec, and others), **GVS และ Stakpure** ทางบริษัทฯ ยินดีให้คำปรึกษาเกี่ยวกับสินค้าที่ลูกค้าต้องการนำไปใช้งานกับงานด้านต่างๆ นอกจากนี้ทางบริษัทฯ ยังรับผิดชอบเกี่ยวกับบริการหลังการขายให้แก่ลูกค้าด้วย

Our Products



Cole-parmer is a leading global manufacturer of proprietary products for fluidics, environmental, analytics, lab essentials and critical research and process equipment for life sciences.



GVS Filter Technology offers a full line of laboratory filtration and analysis products, providing an incomparable experience for the customer in the analytical, chemistry and life science laboratories.



Masterflex Peristaltic pump
Powerful pump built to last in challenging process, research and production environments



We offer only Centrifuge tubes and Serological pipettes



ISMATEC Peristaltic pump
for low flow-rate and high-accuracy research



Ultrapure water systems
Convenient, compact, adaptable for demanding applications in life sciences and labs



Shakers, Melting point apparatus, Water baths, Rockers, etc.



Gel Documentation Imaging and
Chemiluminescence & Fluorescence
Documentation Imaging



Water quality meters such as pH meter,
Conductivity meters, Turbidity meters, etc.



Nano-magnetic beads easy for
DNA/RNA extraction



Solid-phase extraction (SPE) systems and SPE
columns



Electronic Boiler for laboratory and industries



INDEX

TOPIC	PAGE
Cole-parmer: General laboratory equipment	4-5
Masterflex: Peristaltic pumps	6-7
Masterflex: Peristaltic pump heads	8
Masterflex: Tubing	9
Masterflex: Fitting and accessories	10
Ismatec: Peristaltic pumps	10
Ismatec: tubing	10
Kinesis: Solid-Phase Extraction (SPE)	11
Cole-parmer: Vacuum pump	11
Oakton: pH meters, Multiparameter and buffer solutions	11
GVS: Syringe filters, Transfer membranes	12
VWR: Centrifuge tubes	12
VWR: Serological pipettes	12
Argos: Pestle motor mixer	12
Argos: Microcentrifuge tubes "Black"	12
Cole-parmer: Ultrasonic Processors	13
Bioentist: Nan-magnetic bead	13
Vilber: Gel Documentation Imaging	13
Vilber: Chemiluminescence & Fluorescence Documentation Imaging	13
Stakpure: Ultrapure water systems	14
Stuart: Water Distillation	14
ALC: Electronic boiler	14
Techne: Biological Stirrers	14
EVE: Automatic Cell Counter	14
Consumable products	15



Cole-Parmer
an antylia scientific company

Furnaces

- PID microprocessor controller
- Up to 1100 °C
- Capacities: 1.6 to 42 L



Cole-Parmer
an antylia scientific company

VapLock Close System

- HPLC solvent safety Systems
- Protect lab personnel from hazardous solvent vapors



Cole-Parmer
an antylia scientific company

Sieve Shakers

- Touch-screen programmable controller allows selection of vibration level, time, and pauses
- Shaker accepts eight full-height or sixteen half-height 8" dia. sieves. Sieve clamps allow fast, easy insertion and removal of sieve stacks.



Cole-Parmer
an antylia scientific company

Sieves Shakers

- Brass frame/brass wire, SS frame/SS wire
- Dia. 8" and 12" (Full and height)
- Follow up US standard (no.) and Tyler standard (mesh)



Cole-Parmer
an antylia scientific company

Vacuum pump

- Flow rate : 28.3 L/min
- Max Pressure : 4.14 bar
- With gauges, regulators, adjustable relief valve



Cole-Parmer
an antylia scientific company

Bead Sterilizers

- Suitable for use in Biological Safety Cabinet
- Digital heat control up to 300 °C



DIGI-SENSE

Bottle Precision Accuracy Thermometers

- Enclosed bottle ensure accuracy and is ideal for use in environmental chambers
- Nonmercury blue spirit liquid
- Temp. range: +115 to -25 °C



Cole-Parmer
an antylia scientific company

Digital Water Baths

- Easy to read TFT display
- Features high-temperature alarm and safety shutdown
- Max temp. : 100 °C
- Capacity: 2, 5, 10, 20, 28 L



TraceableLive

Data Loggers with Wireless Technology

- No software required PC, Android, iOS data visibility
- Parameters: Temperature / %RH / CO₂ (gas)



Cole-Parmer
an antylia scientific company

Vacuum Ovens

- Ideal for carefully controlled processes such as desiccating, vacuum embedding, plating and semiconductor processing
- Three-way valve allows easy evacuation, purging and venting
- Built-in overtemperature sensor
- Capacity: 19.8 and 65 L



Cole-Parmer
an antylia scientific company

Ultrasonic Cleaners

- Stainless Steel Bath
- LED Display
- Capacities: 2, 3, 6, 9, 13, 20 and 27 Liter
- Temp./time Controller/Degas/Drain valve



Cole-Parmer
an antylia scientific company

Digital Circulating Baths

- Keep temperature steady at point of use
- Temp range: -40 to 200 °C
- Capacity: 7 to 28 L



Cole-Parmer
an antylia scientific company

Mini Incubators

- Built-in internal outlet powers for small shakers or rockers
- Capacity: 20 L
- Temp. range: +15 to +60 °C



Cole-Parmer
an antylia scientific company

Vortex mixer

- Variable speed is useful for a variety of applications
- Shaker features two modes for both "Touch" and "Continuous" operation



Cole-Parmer
an antylia scientific company

Colony Counters

- Audible count confirmation, adjustable pressure-sensitivity increases flexibility
- Read individual plates or calculate an average over multiple plates
- two 50- to 90-mm dish centering adapters



Cole-Parmer
an antylia scientific company

Dialysis membranes

- Ideal for concentration, purification and desalination
- MWCO Cut off : 0.5 to 100 kDa



OAKION
TECHNOLOGIES

pH/EC/ISE/DO/ORP/Multiparameter



Cole-Parmer
an antylia scientific company

Micro-90 Cleaning Solution

- Removes most biological materials
- Micro-90 is a mild, yet powerful, free-rinsing cleaner for use in critical cleaning and general purpose applications.



Wrist Action Shakers

- creates a vigorous mixing action by simulating hand shaking - especially useful for applications where prolonged shaking is required as it can be left on continuously and won't get tired!
- Speed range 8 to 800 oscillations/min



Heating Mantles

- These controlled and grounded electromantles feature a built-in power regulator and safety earth (ground) screen
- Capacity: 50, 100, 250, 500, 1000, 2000, 5000 mL



Orbital Shakers

- Smooth orbital shaking action
- Built-in digital timer and variable speed control to 300 rpm



Shaking Incubators

- Microprocessor controlled shaking speed ensures accuracy
- Forced air circulation ensures uniform temperature inside the chamber
- Temp. range: up to 60 °C



Rocking shakers

- These rocking shakers provide a 3D gyratory motion
- Ideal for low foaming agitation, DNA extractions.



Shell Freezer

- Pre-freeze samples for more efficient freeze drying. Sample containers are rotated in a low-temperature heat transfer solution. This coats the inner surface of the sample container with a uniformly thin layer of the sample, facilitating more efficient vapor flow during the freeze-drying process.



Tube Rotators

- The rotators mix cultures without damaging cells
- Adjustable angle of rotation mixes samples effectively with gentle or vigorous motion
- A variety of tube holder discs allows customization for your application



Centrifuges

- Powerful and versatile universal centrifuges for virtually every Lab application
- Our multi-purpose centrifuges offer a high-speed centrifugation platform which can be customized to fit workflow needs using a wide variety of rotors and accessories



Slide Warmers

- Slide warmer facilitates tissue mounting and slide staining procedures



Portable Incubators

- PID Controller, LED display
- Stainless steel inner chamber
- Temp. range: +5 to 45 oC
- Power supply: DC12V/AC220V

Sample concentrator

is a fast and convenient way of concentrating multiple samples in a block heater at once. Utilizing a simple gas delivery system the sample concentrator passes gas over the surface of your samples via stainless steel needles.

Block Heater

2-,3-Block with analogue and Digital

Available in various hole size for your application



Automatic Melting Point

Stuart has been instrumental in making the automatic melting point a commonplace piece of laboratory equipment. By utilising the latest in digital imaging technology, users for the first time, had the opportunity to record a video of the melt. This provides proof of measurement for traceability, and more importantly allows scientists to trust the automatically obtained result.

Report: Video, Graph, Pic, etc.



C/L Series Small flow rate

I/P Series Powerful systems

L/S Series High-accuracy

B/T Series Highest Flow rate

C/L Series



- Max rpm: 10, 80 and 300 rpm
- Flow rate : 0.002 to 43 mL/min
- Analog Variable –Speed
- IP22

Applications:

- Dispensing and filling
- Chromatography
- Gel column pump
- Spectrophotometer pump
- etc.

L/S Series

Digital pumps

- Max rpm: 100 or 600 rpm
- Flow rate :
 - 0.06 to 580 mL/min (for 100 rpm)
 - 0.006 to 3400 mL/min (for 600 rpm)
- Pump Head Accepted : 1 to 4
- Programmable
- IP33 or 66
- Real-time pump control and monitoring with MasterflexLive

Modular Dispensing Drive

- Digital interface with graphical LCD display
- Remote control available using analog communication: Voltage, current and contact closure
- Modular Drive with Benchtop controller and Wall-mount controller

Stainless Steel Housing pumps

- Control parameter with digital display
- NEMA 4X housings stand up to process and washdown applications
- IP66

MasterflexLive Remote pump control and Monitoring

- Real-time control of all pump parameters. Push notifications alert you to
- Operating conditions and error messages, allowing you to adjust critical Pump processes 24/7 – on need to be onsite.
- Application available on iPhone, Android, MS Windows and Mac OS

Applications:

- Media preparation
- Fluid metering, feed, and transfer
- Acid/base pH control
- Sterile filtration and fluid transfer
- Automated fluid transfer
- Food/beverage and dairy process
- etc.

Applications:

- Pharma/Biopharma Process
- Fluid metering, feed, and transfer
- Plant automation
- Foods/Chemicals/Water/Agricultural Industrial
- etc.

Applications:

- Pharma/Biopharma Process
- Media preparation
- Foods/Chemicals/Water/Agricultural Industrial
- etc.

Applications:

- Pharma / Biopharma processing
- Water / Wastewater treatment
- A&E firms / Process Integrators
- Plant automation / Industrial networking
- etc.

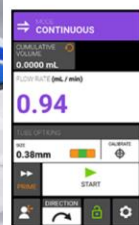
MasterSense series

Reimagine fluid handling-operate, collaborate and connect with ease

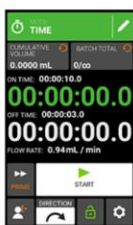
- Intuitive touch-screen interface – quick and easy to program
- Operational models include continuous run, volume dispense, and time dispense
- Save and recall used protocols, each with a unique name
- Secure three-tier access to pump functionality
- Choice of connectivity options – MasterLive, EtherNet/IP

Applications:

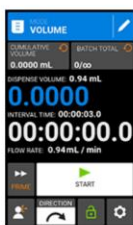
- Pharma / Biopharma processing
- Foods/Chemicals/Water/Agricultural Industrial
- R&D, and all liquid lab transfer
- etc.



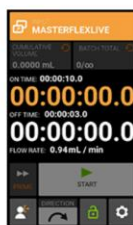
Continuous Mode



Time Mode



Volume Mode



Remote Mode



Tube Calibration



User Access



C/L Series Small flow rate

I/P Series Powerful systems

L/S Series High-accuracy

B/T Series Highest Flow rate

I/P Series



Compact pumps

- RPM : 0.1 to 650 rpm
- Flow rate : 0.0006 to 26 LPM
- Pump Head Accepted : up to 2
- Programmable
- IP33 or 66
- Real-time pump control and monitoring with MasterflexLive

Applications:

- Dispensing and filling
- Chromatography
- Gel column pump
- Spectrophotometer pump
- etc.



Stainless Steel Housing pumps

- Control parameter with digital display
- NEMA 4X housings stand up to process and washdown applications
- IP66

Applications:

- Pharma/Biopharma Process
- Foods/Chemicals/Water/Agricultural Industrial
- Filtration system
- Gel column pump
- etc.



Modular Dispensing Drive

- Digital interface with graphical LCD display
- Remote control available using analog communication: Voltage, current and contact closure
- Modular Drive with Benchtop controller and Wall-mount controller

Applications:

- Pharma/Biopharma Process
- Foods/Chemicals/Water/Agricultural Industrial
- etc.



Washdown Drive System

- Flow rate up to 2.2 LPM per channel (depend on drive, pump head and tubing size)
- Fixed speed
- IP55

Applications:

- Multi Dispensing and filling
- Foods/Chemicals/Water/Agricultural Industrial
- etc.

B/T Series

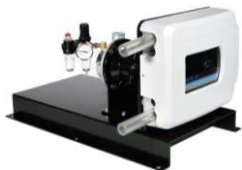


Modular Dispensing Drive

- Flow rate : 0.3 to 42 LPM
- Digital interface with graphical LCD shows pump performance and operating mode – continuous run, timed dispense, copy dispense, or volume dispense
- Remote control available using analog communication: Voltage, current and contact closure
- IP56

Applications:

- Dispensing and filling
- Pharma/Biopharma Process
- Foods/Chemicals/Water/Agricultural Industrial
- all liquid lab transfer
- etc.



Variable speed and air-powered analog Drives

- Flow rate : up to 42 LPM
- Rapid-Load pump head occlusion mechanism slides occlusion bed out of the way for easy tube loading and improved tubing occlusion
- Use air-powered drive in locations where electricity is unsafe
- Rated for ATEX Zone 2, etc.
- IP56

Applications:

- Oil and Gas industrial
- All explosion proof lab and process
- etc.

L/S Portable Sampling Pump Series



Portable Sampling Pump Series

- Rechargeable battery is ideal for field applications
- Can be used in the field for sampling or in the plant as a portable pump
- Operate up to four hours on the self-contained 12 VDC rechargeable battery, or indefinitely from any AC line or 12 VDC power supply
- IP54

Applications:

- Water/Wastewater sampling
- Field for sampling
- etc.






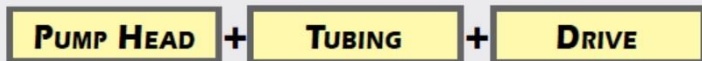
Pump Head

Specification

Peristaltic pump Drive

C/L	L/S	I/P	B/T
-----	-----	-----	-----

	Easy Load	<ul style="list-style-type: none"> New design automatic tubing retention allow for multiple tubing sizes Rotor is constructed of stainless steel Pump head are stackable for multichannel applications 				
	Easy Load II (1-, 2- Channel)	<ul style="list-style-type: none"> New design automatic tubing retention allow for multiple tubing sizes Rotor is constructed of stainless steel Pump head are stackable for multichannel applications 				
	Easy Load 3	<ul style="list-style-type: none"> Same side tubing entry/exit permits easy integration into space-limited Twist-lock mounting feature lets you mount and stack heads in seconds 				
	Multichannel Pump Heads	<ul style="list-style-type: none"> Get low-pulsation synchronous flow in multiple channels without cartridges Flow range 0.045 to 2300 ml/min per channel 				
	Pump Head PTFE Tubing	<ul style="list-style-type: none"> Ideal for high-purity fluids and aggressive organic solvents PTFE tubing is the only wetted part ensuring fluid purity and excellent chemical compatibility 				
	Cytotflow Pump Head	<ul style="list-style-type: none"> The best option for pumping live cells and shear-sensitive fluids Ensure the survival and vitality of live cells 				
	Easy Load II with Open-Head Sensor	<ul style="list-style-type: none"> Available with integrated open-head sensor-connects directly to sensor-equipped drives 				
	B/T Rapid-Load Pump Head	<ul style="list-style-type: none"> Newly designed occlusion mechanism slides occlusion bed out of the way for easy tube loading and improved tubing occlusion Interlock switch shuts off power to stop drive when door is opened 				



MASTERFLEX®
PUMP SYSTEM



Our FREE Tubing Test Kit is a simple way to test your chemicals against different tubing formulations. Kit contains samples of 19 different pump tubing formulations, formulation descriptions, a selection guide, instructions on how to test your tubing, and complete ordering information. Call today! Request item HL-00101-10.

Call or go online to request your FREE test kit today!



Pump tubing for a wide range of Applications and Markets:

Pharmaceutical, Medical research, Industrial, Biotech, Chemical processing, Water treatment, Printing, Food & Beverage, Environmental and Semiconductors

Masterflex Tubing is custom extruded to fit Masterflex pumps and engineered for long life in peristaltic pump applications.

Advantages: Biocompatible, Ultra-smooth, Great for tissue and cell work, Chemical resistance, Heat sealable, etc.

Classifications: USP Class VI, FDA, RoHS, REACH, ADCF, European Pharmacopoeia, NSF, etc.

Sterilization: autoclave, EtO, gamma irradiation

Tubing Formulation



Silicone
(Peroxide-cured)



Biopharm Silicone
(Platinum-cured)



PharMed BPT



Tygon E-LFL



Versilon 2001



Viton



Silicone
(Platinum-crued)



Biopharm Plus Silicone
(Platinum-cured)



PharmaPure



Tygon E-Food



Versilon A-60-N



Solva



Puri-Flex



C-Flex



Chem-Durance Bio



Tygon E-Lab



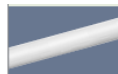
GORE STA-PURE PCS



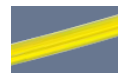
Puri-Prene



C-Flex Ultra



PTFE



Tygon Fuel&Lubricant



GORE STA-PURE PFL

Chemical Compatibility Database

With our Masterflex Chemical Compatibility Database, you can verify the compatibility of your fluid with our unrivaled offering of tubing formulations.

Masterflex.com/MflexChem



L/S Precision Tubing

L/S High-Performance Tubing

Tubing No.	L/S 13	L/S 14	L/S 16	L/S 25	L/S 17	L/S 18	L/S 15	L/S 24	L/S 35	L/S 36
ID	0.8 mm	1.6 mm	3.1 mm	4.8 mm	6.4 mm	7.9 mm	4.8 mm	6.4 mm	7.9 mm	9.7 mm
Hose barb size	1.6 mm	1.6 mm	3.2 mm	4.8 mm	6.4 mm	9.5 mm	4.8 mm	6.4 mm	9.5 mm	9.5 mm
Flow rate (mL/min)	0.06 to 36*	0.21 to 130*	0.8 to 480*	1.7 to 1000*	2.8 to 1700*	3.8 to 2300*	1.7 to 1000*	2.8 to 1700*	3.8 to 2300*	4.8 to 2900*

* Flow rate (approximate) with 1 to 600 rpm

I/P Precision Tubing

I/P High-Performance Tubing

B/T PerfectPosition tubing

Tubing No.	I/P 26	I/P 73	I/P 82	I/P 70	I/P 88	I/P 89	B/T 87	B/T 91
ID	6.4 mm	9.5 mm	12.7 mm	9.5 mm	12.7 mm	15.88 mm	12.7 mm	19.0 mm
Hose barb size	6.4 mm	9.5 mm	12.7 mm	9.5 mm	12.7 mm	15.88 mm	12.7 mm	19.0 mm
Flow rate (L/min)	0.01 to 4*	0.01 to 8*	0.02 to 13*	0.01 to 8*	0.02 to 17*	0.03 to 19*	0.67 to 18.9**	1.4 to 42**

* Flow rate (approximate) with 1 to 650 rpm

** Flow rate (approximate) with 11 to 321 rpm

Fitting and Accessories



Fitting

Various type to comply all your applications such as: Barbed, Reducing Connectors, Y-Connectors, T-Connectors, Luer, Quick-Disconnect Couplings, Clamp Fittings, etc.

Sterilization: autoclave, ethylene oxide or gamma irradiation

Materials: PP, PC, PE, PSF, PVDF, Nylon, etc.



Benchtop tubing Cutter

Steel blade makes right-angle cuts in plastic tubing 1/16" to 5/8" OD.



Autoclavable Cable Ties

Polypropylene (PP) cable ties resist a number of chemicals and are UV-resistant



Ramp Clamp Tubing Clamps

Simply remove wheel to insert tubing, then roll wheel back into clamp to your desired flow rate. Made of pure PBT these clamps are safe to 200 °C



Stainless Steel, Sanitary Clamp

304 Stainless Steel – Ideal for pharmaceutical industry

Ismatec Reglo Miniflex Dispensing Pumps

Versatile multichannel pumps for accurate low-flow fluid delivery – with an intuitive touch-screen



Digital Multichannel pumps

- 5" TFT Touch screen
- Continuous run, volume dispense, and time dispense modes
- Flow rate (per channel): 0.001 to 68 mL/min
- Number of Channel: 2 or 4
- Number of Rollers: 6, 8 and 12
- Flexible operate control via screen, MasterflexLive, or analog remote control



Digital single channel pumps

- 5" TFT Touch screen
- Continuous run, volume dispense, and time dispense modes
- Flow rate: 0.16 to 365 mL/min
- Number of Channel: 1
- Flexible operate control via screen, MasterflexLive, or analog remote control



Gear pump and Piston pump

Achieve high pressure and accurate, pulseless flow – with an intuitive touch-screen interface

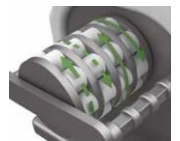
- Flow rate: 0.025 to 5840 ml/min
- Max pressure: up to 20.7 bar (300 psi)



Independent Channel Control (ICC) Pumps

Pump each Channel at different speeds and directions

- 2-, 3-, 4-Channels
- 6, 8, 12 Rollers
- Speed: 0.1 to 100 rpm
- Flow rate: 0.0001 to 43 mL/min per channel



High Precision Multichannel Dispenser (ICP) Pumps

Low-flow, high-accuracy pumps provide repeatable results

- Flow rate: 0.0015 to 44 mL/min or 0.00039 to 11 ml/min
- No. of rollers: 8



Ismatec Tubing : 2-, 3- stop and extension

Tubing Materials:

Puri-Flex, Puri-Prene, Puri-Clear LL, Silicone (Platinum-cured), Silicone (Peroxide-cured), C-Flex, PharMed BPT, Chem-Durance, Tygon, Viton, Solva, Versillion, GORE



Kinesis
Z1

SPE Manifolds 12- or 24-Port

- Flexible sample collection rack will accommodate a variety of receiving vessels.
- Quick vacuum-release valve for better system control.
- Individual valves-release valve for better system control.

Accessories



Solid Phase Extraction (SPE)



Protein Precipitation (PPT)



Supported Liquid Extraction (SLE)

SPE Columns

Normal & reverse phase & ion exchange workup, catch & release & scavenging columns. Sorbent: Silica, Si-cyano, C18, C8, Si-TMA chloride, SCX/SAX, etc.



Stopcock



Needle



Male and Female Luer



Frits



Tube adaptor



Empty tubes

Vacuum pump and Filtration Apparatus



Vacuum pump

- Flow rate : 28.3 L/min
- Max Pressure : 4.14 bar
- With gauges, regulators, adjustable relief valve



Filtration Apparatus

- 1, 2, 5 L Collecting Flask
- 300 ml Funnel, Dia. 47 or 50 mm
- Wet part: PTFE

pH/EC/ISE/DO/ORP/Multiparameter



Waterproof Pocket Testers (IP67)

- Simple to calibrate with automatic standard recognition
- Leakproof cap with fill line functions as a sample/calibration and hydrating cup



Handheld Multiparameter (IP67)

- pH/EC/ISE/Salinity/DO/ORP/BOD



Handheld Meters (IP67)

- Intuitive, user-friendly icons-electrode status displays pH slope
- Built-in stand and wall mount option allow for easy benchtop measurement or storage



Buffers/Conductivity Solutions/ISE solutions and other solutions



Benchtop Meters

- Automatically recognizes calibration solutions
- Data logging allows you to store and recall

GVS Filter Technology offers a full line of Laboratory Filtration and analysis products, providing an incomparable experience for the customer in the analytical, chemistry and life science laboratories.



Syringe Filters

- **Membrane:** CA, NY, MCE, PES, PTFE, PE, RC, PVDF
- **Sterile and non sterile**
- **Pore size:** 0.22, 0.45, 0.80, 1.20, 5.00 μm
- **Housing Diameter:** 13, 25 mm
- **Housing:** Acrylic, PP



Syringeless Filters

- Rapid sample preparation
Single step process, filtering with a plunger in vial
- Sample ready to use after filtration
 - **Pore size:** 0.20 and 0.45 μm
 - **Housing:** Polypropylene (PP)
 - **Membrane Material:** NY, RC, PTFE, PVDF, PES

50 mm Vent Filter



Vent Filters

- **Membrane:** Hydrophobic PTFE
- **Pore size:** 0.45 and 0.22 μm
- **Housing:** Polypropylene (PP)
- **Connectors:** 6 mm to 12 mm stepped barb
- **Filter Area:** 19.6 cm^2
- **Air Flow rate:**
 - 0.45 μm : 32 L/min at 1 bar
 - 0.22 μm : 27 L/min at 1 bar
- **Housing Diameter:** 63 mm
- **Max. Pressure:** 3.5 bar
- **Sterilization:** autoclave or ETO



Transfer Membranes

- Choice for all protein or blotting applications:
Western blotting, Northern blotting, Southern blotting, Chemiluminescent, Immunoblotting, UV crosslinking, etc.
- **Membrane:** Nitrocellulose, Supported Nitrocellulose, PVDF, Neutral Nylon, Reprobing Charged Nylon
 - **Pore size:** 0.45 and 0.22 μm



Centrifuge Tubes

Flat Cap, Sterile, PP, Standard Line, Autoclavable



- **Disposable conical-bottom centrifuge tube are made of high-quality, UPS Class VI**
- **Easy-to-read black graduations are accurate to +/-2%**
- **Large, unerasable frosted white writing area**
- **Volume:** 15 mL and 50 mL
- autoclavable at 121 $^{\circ}\text{C}$
- freezable to -80 $^{\circ}\text{C}$
- max rpm: 12,500 rpm
- leak-proof
- RNase-free, DNase-free and non-pyrogenic

Serological Pipettes

Sterile, plugged, PS, DNase- and RNase- free

- **Disposable Serological pipets are manufactured from polystyrene, sterile and plugged.**
- **Color-coded for quick identification**
- **DNase- and RNase- free**
- **Package: individually**
- **Volume:**
 - 1 ml (Subdivision 0.01 ml) (500ea/case)
 - 5 ml (Subdivision 0.1 ml) (400 ea/case)
 - 10 ml (Subdivision 0.1 ml) (400 ea/case)
 - 5 ml (Subdivision 0.2 ml) (150 ea/case)



Pestle Motor Mixer

Quickly homogenize cells, plant tissue and DNA pellet within microtube vials

Pestle: "DNase-, RNase- free" 1.5 mL and 0.5 mL

Microcentrifuge Tubes LiteSafe "Black" (1.5 and 0.5 mL)

Ideal for use with Fluorescent probes or Ethidium Bromide

- Biocompatible PP
- Max RCF: 15,000 xg
- DNase- and RNase- free
- Autoclavable





stakpure

Omnia tap is the ideal system when both *pure water* and *ultrapure water*, but in relatively small amounts

Features:

- OptiFill dispenser is standard
- Pretreatment set for direct connection to tap water
- 10-litres pure water tank
- Fully recirculation
- Leakage sensor is standard

3 different model:

- OmniaTap, OmniaTap UV, OmniaTap UV/UF

Water quality:

- Type II: up to 0.1 $\mu\text{m}/\text{cm}$
- Type I : 18.2 $\mu\text{m}/\text{cm}$



One hand operation



Easy water dispensing



Flexible on a work surface



stuart

Stuart Water Distillation

Features:

- Fully automatic operation
- Operates from any raw water supply
- Reservoir level control
- Safety features allow unattended operation
- Simple to clean
- Supplied with wall mounting bracket

Water quality:

- pH: 5.0-6.5
- Conductivity: 1.0 – 2.0 $\mu\text{m}/\text{cm}$

Output

- 4 and 8 L/hr



ALC

Electronic Boiler

ทางบริษัทฯ จัดจำหน่ายและรับออกแบบ เครื่องให้กำเนิดไอน้ำ (Electronic Boiler) ในระดับการเรียนการสอน และระดับอุตสาหกรรม โดยทีมงานวิศวกรชำนาญการ

Biological Stirrers

Biological Stirrers

The Stirrers are designed for optimal suspension cell culture and the use of microcarriers.



TECHNE

- Speed range: 0 to 80 rpm
- Designed for incubator environments up to 40 °C and 95% humidity
- 5 models for research
 - 1 Position (for 3000 to 5000 mL Vessel)
 - 2 Positions (for 1000 mL Vessel)
 - 4 Positions (for 500, 1000, 5000 mL Vessel)

Automatic Cell Counter

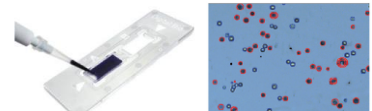


EVE™

Automatic Cell Counter

Applicable for broad range of cell sizes and types from Primary (tissue, blood) cell lines to stem cells

- 500 test results storage
- Transfers the data to PC using USB drive
- Cell size gating function by select range of cell size



Specifications

- Counting time: < 20 seconds
- Cell measurement range: 1 x 10⁴ to 1 x 10⁷ (cells/mL)
- Cell size range: 5 to 60 μm

Cole-Parmer Ultrasonic Processors

Microprocessor-Based programming with digital accuracy and repeatability ensures adherence to the most exacting protocol

Applications: Sample preparation, cell lysing, disaggregation, homogenization, partial size reduction, acceleration of chemical reactions

Ultrasonic Processors



130 W Ultrasonic Processors

- Use for samples from 150 μ L to 150 mL
- With timer and pulser mode



500- and 750 W Ultrasonic Processors

- Use for samples from 250 μ L to 1,000 mL
- Integral temperature controller, energy controller, and memory

Accessories



Probes and tips

Foot switch

Lab jack



Cup Horns



Sound-Abating enclosure

All parameters are continuously displayed on the screen, providing operating mode confirmation without process interruption

Nano-magnetic Bead



MagTec™ Xbead™ Series

Nano magnetic beads for DNA/RNA Extraction

Item Description:

MagTec™ DNA: Nano-magnetic bead for genomics DNA isolation

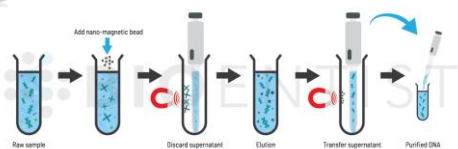
MagTec™ Viruses: Nano-magnetic bead for DNA/RNA viruses isolation

MagTec™ clean DNA: Nano-magnetic bead for DNA clean-up and size-selection

MagTec™ mRNA Capture Bead

MagRack™ x1: for 1x1.5 ml microcentrifuge tube

MagRack™ x8: for 8x1.5 ml microcentrifuge tube



Documentation Imaging



Gel Documentation Imaging

The **Quantum** is the laboratory standard for **DNA and protein gel imaging**. The system is based on an advanced set of performance ideal to achieve high fidelity and quantitative scientific measurement.

- up to 6 excitation channels in the UV and visible area.
- A **large number of dyes could be used such as** Ethidium Bromide, Sybr-Safe, Sybr Green, Gel-Red, Gel-Green, Sybr-gold, etc.
- Scientific grade camera : Up to 20 megapixels, 16-bit, Scientific TIFF file or proprietary file format, Motorized zoom lens with feedback



Chemiluminescence & Fluorescence Documentation Imaging

The **FUSION FX** is ideal for quantification grade imaging. **Chemiluminescent blotting** data poses distinct challenges in producing quantifiable, reproducible data.

- Automatic imaging mode compensates the time course of the chemiluminescence reaction by adjusting the exposure time while maintaining the larger possible image dynamic.
- includes our unique Apps Studio approach to imaging. The Apps Studio is a library which contains **40 different protocols for your blot, gel and other bioluminescence samples**. The protocol oriented Apps Studio ensures reproducibility and one click acquisition for the best ease of use.

Consumable products



Chemicals

- Standard grade and AR grade Chemicals



SPE accessories

- SPE Columns, Empty tubes, Tube adaptor, Frits, Luer, Stopcock, Needle, etc.



Glasswares

- Beakers, Erlenmeyer flasks, Volumetric flasks, Measuring pipette, Burettes, Density bottles, Desiccators, etc.



Pipette tips

- Volume: 10, 20, 100, 200, 300, 1000, 5000, and 10000 μ L
- Non-sterile and sterile tips
- Non-filter tips, filter tips
- Pyrogen-free



Plasticwares

- Beakers, Cylinder, HDPE bottles, Centrifuge bottles, Cryotubes, Funnels, distill Water and safety bottles, TC Flasks, Inoculating Loops, Round-Bottom tubes, Specimen bottles etc.



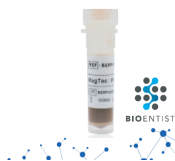
Microtubes, PCR tubes and PCR plates

- Microtubes: 1.5/2.0 mL
- PCR tubes: 0.2 mL, thin wall, strip of 8 tubes
- PCR plates: 0.3 mL max. well volume (96 wells)
- DNase-, RNase-free



Centrifuge tubes

- 15 mL and 50 mL
- freezable to -80°C
- max rpm: 12,500 rpm
- leak-proof
- RNase-free, DNase-free



Nano-magnetic beads

- MagTec™ Xbead™ Series easy for DNA/RNA extraction



Well Plates

- U and Flat bottom
- Non-treat and treat
- Wells: 6, 12, 24, 48, 96, 384 wells
- RNase-free, DNase-free



Freeze drying flasks

- Silicone top, glass bottom
- Capacity: up to 2000 mL



Syringe filters

- Membrane: CA, NY, MCE, PES, PTFE, PE, RC, PVDF
- Sterile and non sterile
- Pore size: 0.22, 0.45, 0.80, 1.20, 5.00 μ m
- Housing Diameter: 13, 25 mm



Forceps

- Thumb, Jansen, Ticket, Brophy, etc.

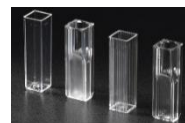
Scissors

- Operating, Iris, Hammacher, Curved, etc.

Spatulas



Filter Papers / Membranes Filters



Cuvette

- Disposable (Plastic), Glass, Quartz

MASTERFLEX®



ISMATEC

Masterflex and Ismatec Tubing

- **Masterflex and Ismatec Tubing** are custom extruded to fit Masterflex pumps and engineered for long life in peristaltic pump applications.



Folding skirt stoppers

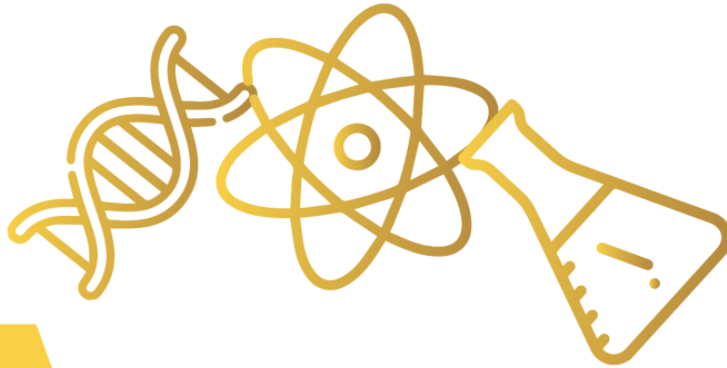
- Rubber stoppers (-20 to 100°C)
- Silicone stoppers (-60 to 220°C)



pH Buffer and other solutions



Made to order Glasswares



ALCHEMIST

SCIENTIFIC CO.,LTD
Solution To Grow

Cole-Parmer®
an antylia scientific company



stakpure

ALCHEMIST SCIENTIFIC Co., LTD

บริษัท แอลเคมิสต์ โซลิวชันส์ จำกัด (สำนักงานใหญ่)

300/218 โครงการพาศิไอ้ พระราม 9-ศรีนครินทร์ ถนนกรุงเทพกรีฑา

แขวงหัวหมาก เขตบางกะปิ กรุงเทพมหานคร 10240

เลขประจำตัวผู้เสียภาษีอากร : 0105562165065

Tel: 096-8953750 E-mail: Leader.alchemist@outlook.com

Website: www.alchemistscientificthailand.com/products

Facebook: www.facebook.com/alchemistscientific99



LINE